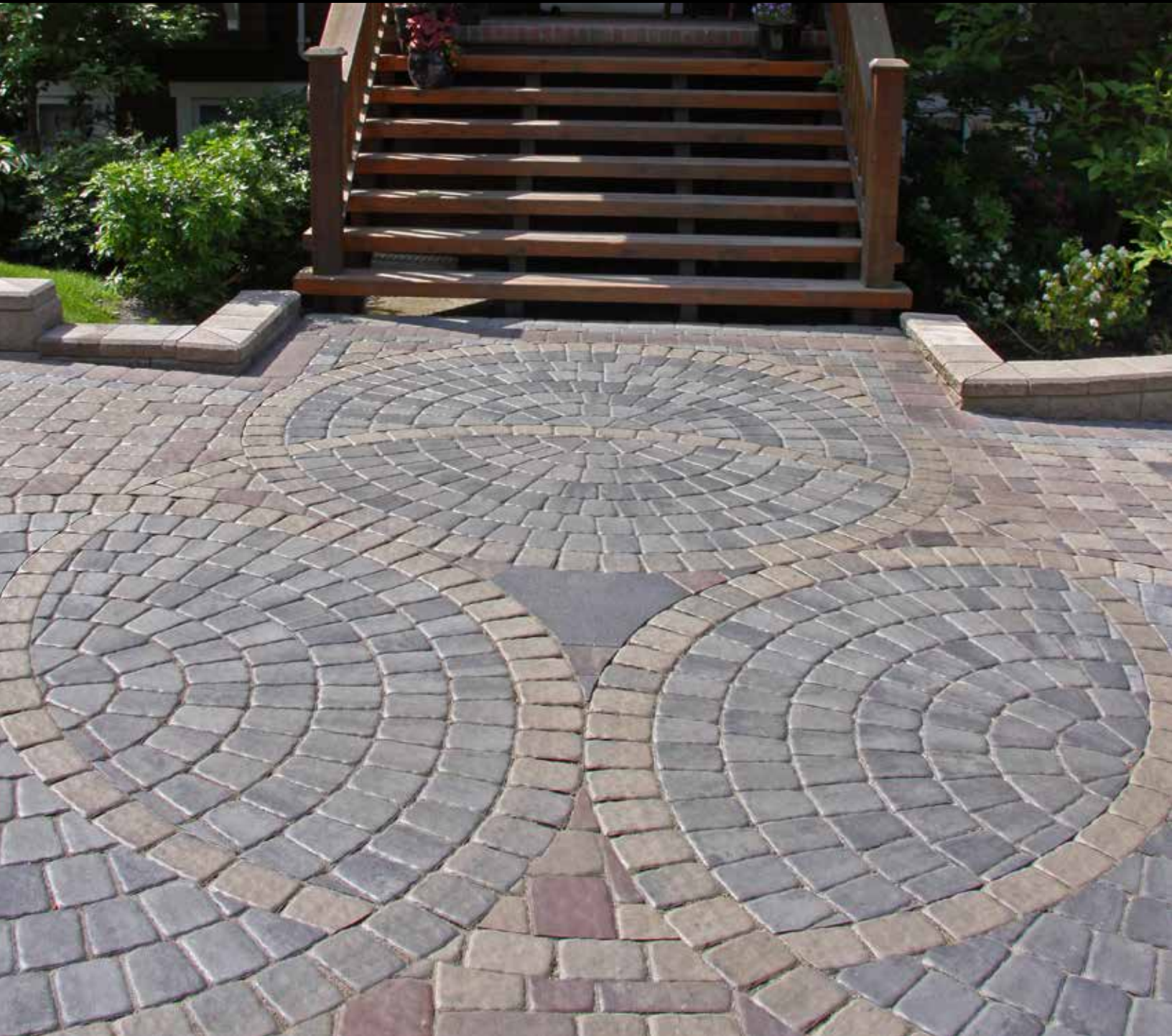


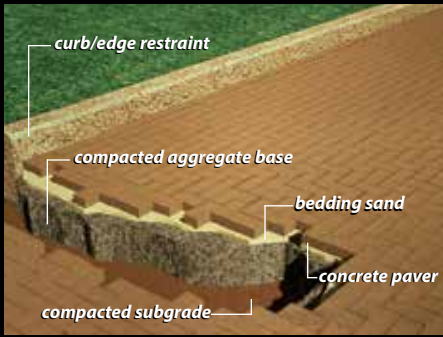
Villa Stone



Where function meets style



ABBOTSFORD
CONCRETE PRODUCTS



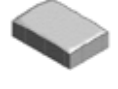
The **Villa Stone** paver series allows you to make a real design statement using sweeping curves, dramatic fans, full and half circles as well as a random cobble pattern. This paver will accent any landscape.



Type 1
160mm x 240mm
6-5/16" x 9-7/16"



Type 2
160mm x 160mm
6-5/16" x 6-5/16"



Type 3
120mm x 160mm
4-3/4" x 6-5/16"



How to get a professional look.

1. Compact and level the sub-base.
2. Backfill with 4" to 10" (50-250mm) of 3/4" minus road mulch or equivalent compacted granular fill.
3. Spread 1" (25mm) of concrete sand over fill. Avoid walking on the prepared base as this may cause the finished surface to be uneven.
4. Place Villa Stone pavers in the desired pattern close together. The spacing should be consistent to help maintain a uniform pattern. Pavers can be cut to fit with a paver cutter or masonry saw.
5. Tamp down pavers with a mechanical vibrator until level and firmly in place.
6. Fill joints completely by sweeping Abbotsford Concrete's joint sand across the surface, then compacting until joints are completely filled. The area is now ready for immediate use.

Circle Package



Three Quarter Stone
118mm x 158mm
4-5/8" x 6-1/4"



Half Stone
78mm x 158mm
3" x 6-1/4"



Small Circle Stone
68mm x 158mm x 182mm
2-11/16" x 6-1/4" x 7-1/8"



Large Circle Stone
98mm x 132mm x 158mm
3-7/8" x 5-13/16" x 6-1/4"

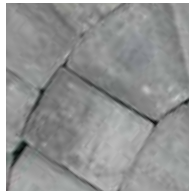


Center Stone
78mm x 158mm
3" x 6-1/4"



Our Villa Stone is made with the unique **PermaFinish** two layer process. In this process, the wearing surface of the paver is composed of uniformly graded hard, sharp granite aggregate, high cement content and a correspondingly high pigment content. This results in a dense high strength surface, more intense color stability and greater abrasion resistance than traditional paving stones. The balance of the paver is composed of high strength compressed concrete.

Unsealed



Granite* Blend

Sealed**



Unsealed



Indian Summer* Blend

Sealed**



Teak* Blend



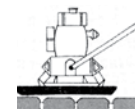
Sandalwood* Blend



While the colors shown here are represented as accurately as possible, they should only be used as a guide. Actual samples should be viewed before making a final color selection.

*For best results, pavers should be installed from several pallets to ensure color consistency, especially with multi-color blends.

** 'Sealed' pavers in this brochure have received an acrylic sealer, which is recommended to help with maintenance and to protect them against staining. Sealing is done post installation.



Note: Due to this paver's unique profile, a special mat is required to be placed on the bottom of the compactor. Please contact your local dealer or Abbotsford Concrete technical representative for complete details.

Specifications:

ABBOTSFORD CONCRETE PRODUCTS

Pavers are manufactured to ASTM C 936 and CSA A231.2-14 specifications, HydraPressed Slabs to CSA A231.1-14 specifications.

Concrete strength: 8000 PSI (55 MPA)

Absorption: shall not exceed 5%

Weight: 2-3/8" (60mm): approx. 28lbs/ft² (140kg/m²)

3-1/8" (80mm): approx. 37lbs/ft² (182kg/m²)

Visit our website at

www.pavingstones.com

for our complete product guide,
color selection, design details
and photo gallery,
or call toll free 1-800-663-4091.

